

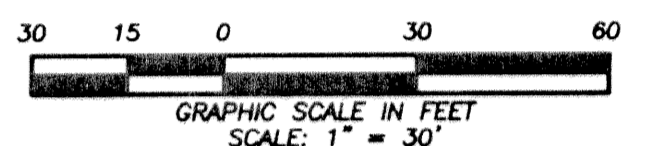
"VENRA DEVELOPMENT, LLC"

BEING A REPLAT OF A PORTION OF TRACT 12, BLOCK 18 PALM BEACH FARMS COMPANY PLAT NO. 3, AS RECORDED IN PLAT BOOK 2, PAGES 45 THROUGH 54 INCLUSIVE, OF THE PUBLIC RECORDS OF PALM BEACH COUNTY, FLORIDA, LYING IN SECTION 12, TOWNSHIP 44 SOUTH, RANGE 41 EAST.
SHEET 2 OF 2 MAY 2002

STATE OF FLORIDA } S.S.
COUNTY OF PALM BEACH }

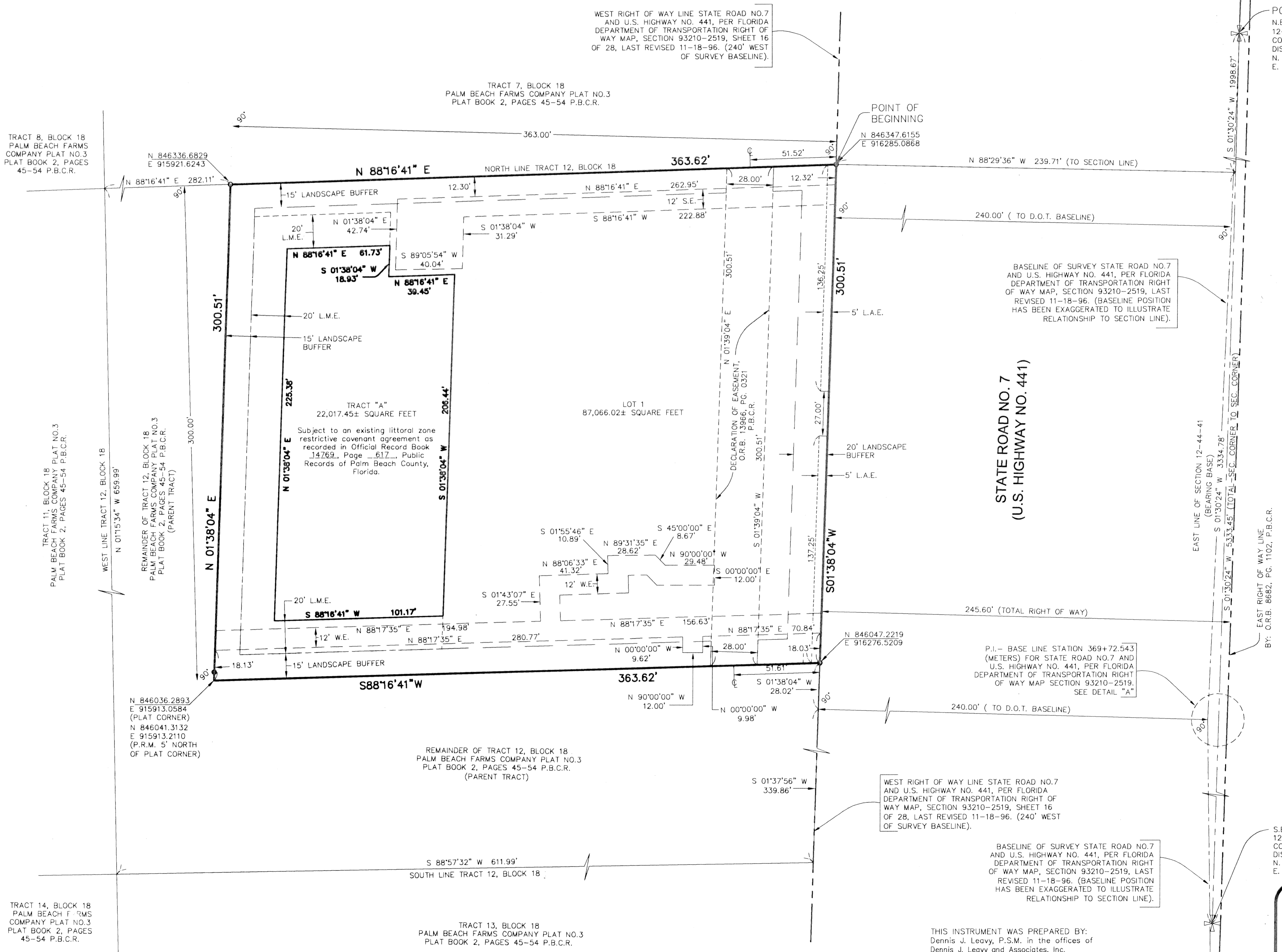
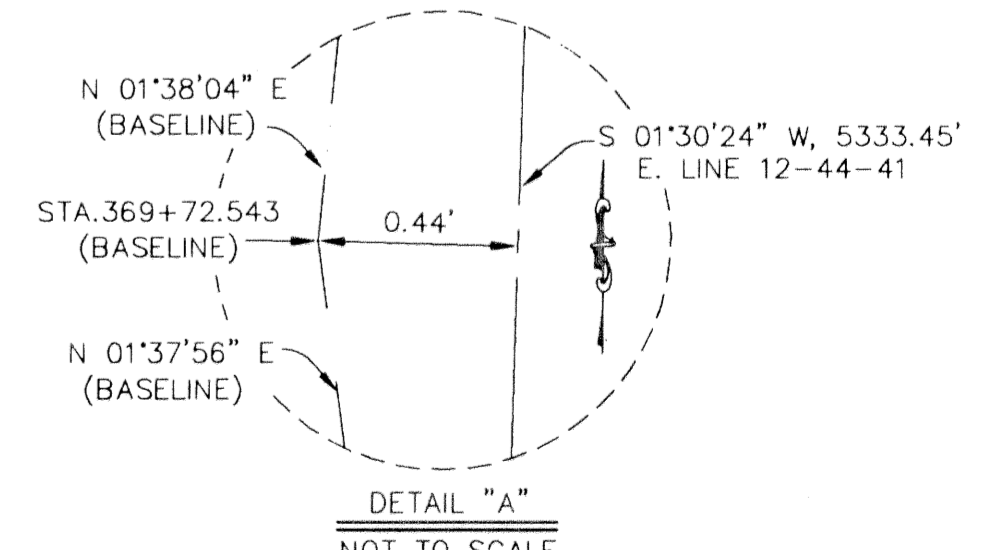
THIS INSTRUMENT WAS FILED FOR RECORD AT _____ M. THIS _____ DAY OF _____, 20____ AND DULY RECORDED IN: PLAT BOOK _____ ON PAGE _____ DOROTHY WILKEN CLERK CIRCUIT COURT. BY: _____ DEPUTY CLERK.

SHEET 2 OF 2



LEGEND

- (C) = CALCULATED
- D.B. = DEED BOOK
- D.O.T. = DEPARTMENT OF TRANSPORTATION
- ELEV. = ELEVATION(NATIONAL GEODETIC VERTICAL DATUM OF 1929)
- L.A.E. = LIMITED ACCESS EASEMENT
- L.M.E. = LAKE MAINTENANCE EASEMENT
- LB# = LICENSED BUSINESS NUMBER
- L.B. = LANDSCAPE BUFFER
- N/D = NAIL AND DISC
- O.R.B. = OFFICIAL RECORD BOOK
- P.I. = POINT OF INTERSECTION
- P.K. = PARKER/KALON
- PRM = PERMANENT REFERENCE MONUMENT
- P.B. = PLAT BOOK
- P.B.C. = PALM BEACH COUNTY
- P.B.C.R. = PALM BEACH COUNTY RECORDS
- PG. = PAGE(S)
- R/W = RIGHT OF WAY
- SEC. = SECTION
- S.E. = SEWER EASEMENT
- U.E. = UTILITY EASEMENT
- W.E. = WATER EASEMENT
- ☉ = CENTERLINE



S.E. CORNER OF SECTION 12-44-41, FOUND PALM BEACH COUNTY MONUMENT WITH BRASS DISC IN CONCRETE. N. 843007.6300 E. 916437.0850

BASELINE OF SURVEY STATE ROAD NO.7 AND U.S. HIGHWAY NO. 441, PER FLORIDA DEPARTMENT OF TRANSPORTATION RIGHT OF WAY MAP, SECTION 93210-2519, LAST REVISED 11-18-96. (BASELINE POSITION HAS BEEN EXAGGERATED TO ILLUSTRATE RELATIONSHIP TO SECTION LINE).

WEST RIGHT OF WAY LINE STATE ROAD NO.7 AND U.S. HIGHWAY NO. 441, PER FLORIDA DEPARTMENT OF TRANSPORTATION RIGHT OF WAY MAP, SECTION 93210-2519, SHEET 16 OF 28, LAST REVISED 11-18-96. (240' WEST OF SURVEY BASELINE).

THIS INSTRUMENT WAS PREPARED BY: Dennis J. Leavy, P.S.M. in the offices of Dennis J. Leavy and Associates, Inc. 460 Business Park Way, Suite D Royal Palm Beach, Florida 33411 (561) 753 - 0650

Dennis J. Leavy & Associates, Inc.
LAND SURVEYORS & MAPPERS

460 BUSINESS PARK WAY • SUITE D • ROYAL PALM BEACH, FL • 33411
PHONE: (561) 753-0650 FAX: (561) 753-0290

SCALE: 1" = 30' CHECKED BY: D.A.B. DATE: 05/10/02
DRAWN BY: D.J.L. JOB NO.: 02-069 (CAD FILE 02-069PLAT)

SUBDIVISION VENRA DEVELOPMENT, LLC
BOOK 97
PAGE 180
FLOOD MAP # 100 B
ZONING AR
QUAD # 62
SE 82, 206
TAX 100B
FUD NAME

TRACT 14, BLOCK 18 PALM BEACH FARMS COMPANY PLAT NO.3 PLAT BOOK 2, PAGES 45-54 P.B.C.R.

TRACT 13, BLOCK 18 PALM BEACH FARMS COMPANY PLAT NO.3 PLAT BOOK 2, PAGES 45-54 P.B.C.R.

REMAINDER OF TRACT 12, BLOCK 18 PALM BEACH FARMS COMPANY PLAT NO.3 PLAT BOOK 2, PAGES 45-54 P.B.C.R. (PARENT TRACT)

N. 846036.2893 E. 915913.0584 (PLAT CORNER)
N. 846041.3132 E. 915913.2110 (P.R.M. 5' NORTH OF PLAT CORNER)

TRACT 11, BLOCK 18 PALM BEACH FARMS COMPANY PLAT NO.3 PLAT BOOK 2, PAGES 45-54 P.B.C.R.

REMAINDER OF TRACT 12, BLOCK 18 PALM BEACH FARMS COMPANY PLAT NO.3 PLAT BOOK 2, PAGES 45-54 P.B.C.R. (PARENT TRACT)

TRACT 8, BLOCK 18 PALM BEACH FARMS COMPANY PLAT NO.3 PLAT BOOK 2, PAGES 45-54 P.B.C.R.

TRACT 7, BLOCK 18 PALM BEACH FARMS COMPANY PLAT NO.3 PLAT BOOK 2, PAGES 45-54 P.B.C.R.